

CROSS REFERENCE

Airtek to Thermal Transfer Products

Water Cooled Aftercoolers

Airtek Model Number	SCFM		Thermal Transfer Model Number	SCFM	
	Two Stage	Rotary		Two Stage	Rotary
810	85	100	AB-404-A4-0	80	110
820	160	185	AB-405-B4-0	150	205
835	185	220			
836	230	260	AB-705-B4-0	310	439
4048	260	325			
4060	430	550	AB-1006-B6-0	440	654
4072	520	650			
6048	460	575			
6060	750	937	AB-1206-C6-0	640	955
6072	1225	1531	AB-1207-C6-0	1250	1690
8048	750	937	AB-1206-C6-0	640	955
8060	1300	1625	AB-1207-C6-0	1250	1690
8072	2322	2902	AB-1607-D6-0	2100	3080

Air Cooled Aftercoolers

Airtek Model Number	SCFM	Thermal Transfer Model Number	SCFM
401	25	AA-50	35
402	48	AA-50	50
403	80	AA-80	80
404	125	AA-120	120
406	185	AA-150	150
407	260	AA-300	300
408	365	AHP-400	450
409	560	AHP-725	640
411	650	AHP-725	
412	750	AHP-725	725
413	900	AHP-950	950
414	1100	AHP-1200	1200
416	1460	AHP-1600	1600
417	1800	AHP-2000	2000
418	2500	AHP-2500	2500
419	3000	AHP-3000	3000
421	3500	AHP-3500	3500

AKG to Thermal Transfer Products

Air Cooled Cross Reference

AKG		THERMAL TRANSFER PRODUCTS		
Model	Compressor HP	Model	Compressor HP	Maximum CFM
AOC-8	5-7.5	-	-	-
AOC-15	10-15	ACOC-400	15-35	175
AOC-30	20-30	ACOC-400	15-35	175
AOC-40	40	ACOC-725	40-55	275
AOC-75	50-75	ACOC-950	60-85	425
AOC-125	100-125	ACOC-1600	125-155	775
AOC-175	150-175	ACOC-2000	160-225	1125
AOC-250	200-250	ACOC-2500	230-275	1375
AOC-350	300-350	ACOC-3500	330-360	1800

Thermal, non-dimensional interchanges

AKG				THERMAL TRANSFER PRODUCTS			
MODEL NUMBER	Max. CMF - 15 DEG Approach			MODEL NUMBER	Max. CMF - 15 DEG Approach		
	150 F INLET	200 F INLET	250 F INLET		150 F INLET	200 F INLET	250 F INLET
CC-100	120	80	60	AA-120*	138	105	87
CC-200	250	160	120	AHP-400	384	375	300
CC-450	500	350	250	AHP-725	650	560	545
CC-600	750	500	400	AHP-950	871	754	712
CC-1000	1200	1000	800	AHP-1600	1440	1290	1200
CC-1600	1800	1400	1200	AHP-2500	2220	1980	1880

Thermal, Non-Dimensional Interchanges; *Core - Aluminum Fins and Copper Tubes

AKG			THERMAL TRANSFER PRODUCTS		
Model	Flow	HP*	Model	Flow	HP*
AC-8	2.2-50	5.5-9	BOL-8	2-50	8-15.5
AC-16	4-50	9-19	BOL-16	3-50	15.3-29.5
AC-30	6-80	18-29	BOL-30	6-80	15.3-29.5
AC-160	20-300	90-200	AOL-3000	44-310	137-235
AC-250	30-300	120-260	AOL-3500	44-310	145-250

** Heat removal with 50°F Entering Temperature Difference (ETD), 50 SUS oil

*** For flow range use AOL-1600

AKG	THERMAL TRANSFER PRODUCTS
C-8	MA-8
C-12	MA-12
C-14	MA-14
C-18	MA-18
C-20	MA-20
C-32	MA-32
C-48	MA-48
C-66	MA-66
C-82	MA-82
C-120	MA-120

Exact Thermal and Dimensional Interchange

AKG	THERMAL TRANSFER PRODUCTS
DC-10-12/24	MA-12-4A/B
DC-16-12/24	MA-18-4A/B
DC-20-12/24	MA-32-4A/B
DC-45-12/24	MA-232-4A/B
DC-60-12/24	MA-248-4A/B

Exact Thermal and Dimensional Interchange

AKG	THERMAL TRANSFER PRODUCTS
AC-8	BOL-8
AC-16	BOL-16
AC-30	BOL-30
AC-40	BOL-725
AC-70	BOL-950
AC-100	BOL-1200
AC-130	BOL-1600
AC-160	BOL-2000
ACL-8	BOL-8-LN
ACL-16	BOL-16-LN
ACL-30	BOL-30-LN
ACL-40	BOL-725-LN
ACL-70	BOL-950-LN
ACL-100	BOL-1200-LN
ACL-130	BOL-1600-LN
ACL-160	BOL-2000-LN

Approximate Thermal and Dimensional Interchange

American Industrial to Thermal Transfer Products

Air / Oil

American Industrial Series	Thermal Transfer Series
AC	AO
ACF	AOF
AOCH	AOVH
ACHM	AOHM
AOCHM	AOVHM
AOCS	OCA
AOM	M
AOMF	MF
EOC	AOC

American Industrial Series	Thermal Transfer Series
AOCS-453	OCA-450
AOCS-603	OCA-600
AOCS-1005	OCA-1000
AOCS-1505	OCA-1500
AOCS-2010	OCA-2000
AOCS-2515	OCA-2500
AOCS-3120	OCA-3100

**Exact dimensional interchange*

Water / Oil

American Industrial Series	Thermal Transfer Series
AB	B
SAE	BS
AB 2000	CA
AA	A
STA	SSA
CS	C
STS	SSC
CK	EK
URCS	UC

Most Models exact dimensional crossovers, contact factory for further information

ASA to Thermal Transfer Products

ASA	Thermal Transfer Products
TT02 12/24V	MA-3-4A/B
TT04 12/24V	MA-3.5-4A/B
TT06 12/24V	MA-12-4A/B
TT07 12/24V	MA-18-4A/B
ASA-0115 12/24V	MA-32-4A/B
ASA-0177 12/24V	MA-48-4A/B
ASA-0257 12/24V	MA-232-4A/B
ASA-0367 12/24V	MA-248-4A/B

Approximate Thermal and Non-Dimensional Interchange

ASA	Thermal Transfer Products
ASA-0115 230/460V	BOL-16
ASA-0177 230/460V	BOL-30
ASA-0256 230/460V	BOL-30
ASA-0367 230/460V	BOL-725
ASA-0567 230/460V	BOL-950
ASA-0927 230/460V	BOL-1200
ASA-0929 230/460V	BOL-1600

Approximate Thermal and Non-Dimensional Interchange

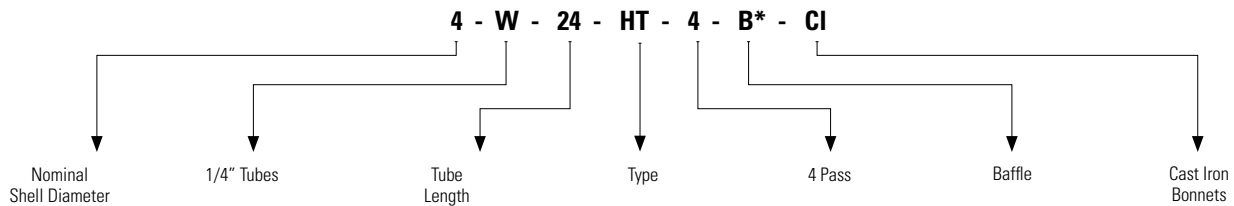
Ametek, Ketema, Whitlock to Thermal Transfer Products

Type HT Cross Reference

THERMAL TRANSFER				WHITLOCK (AMETEK) TYPE HT					
Model Number		Surface Area (Ft. ²)		Model Number		Surface Area (Ft. ²)		Baffle Spacing	
1/4" OD	3/8" OD	1/4" OD	3/8" OD	1/4" OD	3/8" OD	W	Y	A	B
A-408-4	–	1.35	–	2W8	–	1.3	–	–	–
A-412-4*	–	2.0	–	2W12	–	2.0	–	–	–
A-418-4*	–	3.0	–	2W18	–	3.0	–	–	–
A-424-4*	–	4.1	–	2W24	–	4.0	–	–	–
A-608-4	–	2.6	–	3W8	3Y8	2.8	1.8	1.5	2.875
A-612-4*	–	3.9	–	3W12	3Y12	4.1	3.2	1.5	2.875
A-614-4	–	4.6	–	3W14	3Y14	4.9	3.7	1.5	2.875
A-618-4*	–	5.9	–	3W18	3Y18	6.2	4.8	1.5	2.875
A-624-4	–	7.9	–	3W24	3Y24	8.4	5.5	1.5	2.875
A-630-4*	–	9.8	–	3W30	3Y30	10.4	8.0	1.5	2.875
A-812-4*	–	7.1	–	4W12	4Y12	7.6	5.1	1.5	4
A-814-4	–	8.3	–	4W14	4Y14	8.8	5.9	1.5	4
A-818-4*	–	10.6	–	4W18	4Y18	11.4	7.6	2.5	4
A-824-4	–	14.1	–	4W24	4Y24	15.2	10.2	2.5	4
A-830-4*	–	17.7	–	4W30	4Y30	19.0	12.7	2.5	4
A-836-4	–	21.2	–	4W36	4Y36	22.8	15.3	2.5	4
A-1012-4*	A-1012-6*	11.8	7.5	5W12	5Y12	12.0	8.2	1.5	4
A-1014-4*	A-1014-6	13.7	8.7	5W14	5Y14	14.1	9.6	1.5	4
A-1018-4*	A-1018-6*	17.7	11.2	5W18	5Y18	18.1	12.4	2.38	4
A-1024-4*	A-1024-6	23.6	14.9	5W24	5Y24	24.1	16.5	2.5	5
A-1036-4*	A-1036-6	35.3	22.4	5W36	5Y36	36.2	24.7	2.5	5
A-1218-4*	A-1218-6*	25.1	17.7	6W18	6Y18	27.9	18.3	2.5	6
A-1224-4*	A-1224-6	33.5	23.6	6W24	6Y24	37.2	24.4	2.5	6
A-1236-4*	A-1236-6	50.3	35.3	6W36	6Y36	55.8	36.5	2.5	6
A-1248-4*	A-1248-6	67.0	47.1	6W48	6Y48	74.4	48.7	2.5	6
A-1260-4*	A-1260-6	83.8	58.9	6W60	6Y60	93.0	61.0	2.5	6
A-1624-4*	A-1624-6	58.6	40.1	8W24	8Y24	65.0	44.0	2.38	8
A-1636-4*	A-1636-6	88.0	60.1	8W36	8Y36	97.5	65.9	2.38	8
A-1648-4*	A-1648-6	117.3	80.1	8W48	8Y48	130.0	87.9	2.38	8
A-1672-4*	A-1672-6	175.9	120.2	8W72	8Y72	194.9	131.9	2.38	8
A-1696-4*	A-1696-6*	234.6	160.2	8W96	8Y96	260.0	175.6	2.38	8

Thermal Interchanges Only—Not Dimensionally

Whitlock Code Example



*S = Custom Baffle Spacing

Thermal Transfer Products - B Series to EK Series (Bare Tube to Finned Tube)

Cross Reference

EK MODEL	REPLACES "B" MODEL	REPLACES "B" MODEL
EK-508-0	B-701-C4-F	
EK-512-0	B-701-B4-F	
EK-514-0	B-702-C4-F	
EK-518-0	B-702-B4-F	
EK-524-0	B-703-B4-F	
EK-536-0		
EK-708-0	B-701-B4-F	
EK-712-0	B-702-C4-F	
EK-714-0	B-702-B4-F	
EK-718-0	B-703-C4-F	
EK-724-0	B-1002-C4-F	
EK-736-0	B-1003-C4-F	
EK-708-T	B-702-C4-F	
EK-712-T	B-702-B4-F	
EK-714-T	B-703-C4-F	
EK-718-T	B-703-B4-F	Also Low End B-1002-C4-F
EK-724-T	B-1002-B4-F	
EK-736-T	B-1003-B4-F	
EK-1012-0	B-1002-D4-F	Also High End B-702-B4-F
EK-1014-0	B-1002-C4-F	
EK-1018-0	B-1202-C4-F	
EK-1024-0	B-1003-C4-F or B-1202-C4-F	
EK-1036-6-0	B-1204-C4-F	Also Low End B-1603-C4-F
EK-1036-3-0	B-1205-C4-F	Up To 36 GPM
EK-1048-6-0	B-1207-D4-F	Also Low End B-1604-C4-F
EK-1048-4-0	B-1206-C4-F	
EK-1012-T	B-1002-C4-F	Also Low End B-1202-D4-F
EK-1014-T		
EK-1018-T	B-1003-C4-F	Also Low End B-1202-C4-F
EK-1024-T	B-1003-C4-F or B-1202-B4-F	

- This list gives "EK" equivalents to "B" series units. The "B" units listed to NOT necessarily replace the corresponding "EK" units. At times there may be other factors to consider when replacing one style of unit with another (ie. "No. of passes or pressure drop.)
- Similar reductions in size and cost are potentially available for ANY water cooled oil cooler. Compare the performance curve of unit to replace with performance curves in the "EK" Series Bulletin.

Basco to Thermal Transfer Products

Water Cooled Type 500 Cross Reference

BASCO				THERMAL TRANSFER		
Current Model Number	Original Model Number	Tube Count	Surface Area (Ft.)	Model Number	Tube Count	Surface Area (Ft.)
5A-01A-03-014	03014-S-1	60	4.6	C-614-1.3-4-0	60	4.6
5A-03A-03-014	03014-S-2			C-614-1.3-4-T		
5A-05A-03-014	03014-S-4			C-614-1.3-4-F		
5A-02A-03-014	03014-L-1			C-614-3-4-0		
5A-04A-03-014	03014-L-2			C-614-3-4-T		
5A-06A-03-014	03024-L-4			C-614-3-4-F		
5A-01A-03-024	03024-S-1	60	7.8	C-624-2-4-0	60	7.8
5A-03A-03-024	03024-S-2			C-624-2-4-T		
5A-05A-03-024	03024-S-4			C-624-2-4-F		
5A-02A-03-024	03024-L-1			C-624-3-4-0		
5A-04A-03-024	03024-L-2			C-624-3-4-T		
5A-06A-03-024	03024-L-4			C-624-3-4-F		
5A-01A-04-014	04014-S-1	104	7.9	C-814-1.3-4-0	104	7.9
5A-03A-04-014	04014-S-2			C-814-1.3-4-T		
5A-05A-04-014	04014-S-4			C-814-1.3-4-F		
5A-02A-04-014	04014-L-1			C-814-3-4-0		
5A-04A-04-014	04014-L-2			C-814-3-4-T		
5A-06A-04-014	04014-L-4			C-814-3-4-F		
5A-01A-04-024	04024-S-1	104	13.6	C-824-2-4-0	104	13.6
5A-03A-04-024	04024-S-2			C-824-2-4-T		
5A-05A-04-024	04024-S-4			C-824-2-4-F		
5A-02A-04-024	04024-L-1			C-824-4-4-0		
5A-04A-04-024	04024-L-2			C-824-4-4-T		
5A-06A-04-024	04024-L-4			C-824-4-4-F		
5A-01A-04-036	04036-S-1	104	20.4	C-836-2-4-0	104	20.4
5A-03A-04-036	04036-S-2			C-836-2-4-T		
5A-05A-04-036	04036-S-4			C-836-2-4-F		
5A-02A-04-036	04036-L-1			C-836-4-4-0		
5A-04A-04-036	04036-L-2			C-836-4-4-T		
5A-06A-04-036	04036-L-4			C-836-4-4-F		
5A-01A-05-014	05014-S-1	80	9.1	C-1014-1.3-6-0	80	9.1
5A-03A-05-014	05014-S-2			C-1014-1.3-6-T		
5A-05A-05-014	05014-S-4			C-1014-1.3-6-F		
5A-02A-05-014	05014-L-1			C-1014-3-6-0		
5A-04A-05-014	05014-L-2			C-1014-3-6-T		
5A-06A-05-014	05014-L-4			C-1014-3-6-F		
5A-01A-05-024	05024-S-1	80	16	C-1024-2-6-0	80	16
5A-03A-05-024	05024-S-2			C-1024-2-6-T		
5A-05A-05-024	05024-S-4			C-1024-2-6-F		
5A-02A-05-024	05024-L-1			C-1024-4-6-0		
5A-04A-05-024	05024-L-2			C-1024-4-6-T		
5A-06A-05-024	05024-L-4			C-1024-4-6-F		

Exact Thermal and Dimensional Interchanges - Service Parts also Interchangeable
 "5A" prefix indicates admiralty brass tubes. "2A" prefix in place of the "5A" prefix indicates copper tubes in BASCO units and is interchangeable with TTPL "C" series units.

Basco to Thermal Transfer Products

Water Cooled 500 Cross Reference

BASCO				THERMAL TRANSFER		
Current Model Number	Original Model Number	Tube Count	Surface Area (Ft.)	Model Number	Tube Count	Surface Area (Ft.)
5A-01A-05-036	05036-S-1	80	24	C-1036-2-6-O	80	24
5A-03A-05-036	05036-S-2			C-1036-2-6-T		
5A-05A-05-036	05036-S-4			C-1036-2-6-F		
5A-02A-05-036	05036-L-1			C-1036-4-6-O		
5A-04A-05-036	05036-L-2			C-1036-4-6-T		
5A-06A-05-036	05036-L-4			C-1036-4-6-F		
5A-01A-06-024	06024-S-1	116	23	C-1224-2-5-6-O	120	23.8
5A-03A-06-024	06024-S-2			C-1224-2-5-6-T		
5A-05A-06-024	06024-S-4			C-1224-2-5-6-F		
5A-02A-06-024	06024-L-1			C-1224-3-6-6-O		
5A-04A-06-024	06024-L-2			C-1224-3-6-6-T		
5A-06A-06-024	06024-L-4			C-1224-3-6-6-F		
5A-01A-06-036	06036-S-1	116	34	C-1236-2-5-6-O	120	35.2
5A-03A-06-036	06036-S-2			C-1236-2-5-6-T		
5A-05A-06-036	06036-S-4			C-1236-2-5-6-F		
5A-02A-06-036	06036-L-1			C-1236-5-6-O		
5A-04A-06-036	06036-L-2			C-1236-5-6-T		
5A-06A-06-036	06036-L-4			C-1236-5-6-F		
5A-01A-06-048	06048-S-1	116	45	C-1248-3-6-O	120	47.1
5A-03A-06-048	06048-S-2			C-1248-3-6-T		
5A-05A-06-048	06048-S-4			C-1248-3-6-F		
5A-02A-06-048	06048-L-1			C-1248-6-6-O		
5A-04A-06-048	06048-L-2			C-1248-6-6-T		
5A-06A-06-048	06048-L-4			C-1248-6-6-F		
5A-01A-06-060	06060-S-1	116	56	C-1260-3-6-6-O	120	58.9
5A-03A-06-060	06060-S-2			C-1260-3-6-6-T		
5A-05A-06-060	06060-S-4			C-1260-3-6-6-F		
5A-02A-06-060	06060-L-1			C-1260-6-6-O		
5A-04A-06-060	06060-L-2			C-1260-6-6-T		
5A-06A-06-060	06060-L-4			C-1260-6-6-F		
5A-01A-08-024	08024-S-1	232	45.5	C-1724-3-6-O	240	47.1
5A-03A-08-024	08024-S-2			C-1724-3-6-T		
5A-05A-08-024	08024-S-4			C-1724-3-6-F		
5A-02A-08-024	08024-L-1			C-1724-5-6-O		
5A-04A-08-024	08024-L-2			C-1724-5-6-T		
5A-06A-08-024	08024-L-4			C-1724-5-6-F		
5A-01A-08-036	08036-S-1	232	68.3	C-1736-4-6-O	240	70.7
5A-03A-08-036	08036-S-2			C-1736-4-6-T		
5A-05A-08-036	08036-S-4			C-1736-4-6-F		
5A-02A-08-036	08036-L-1			C-1736-6-6-O		
5A-04A-08-036	08036-L-2			C-1736-6-6-T		
5A-06A-08-036	08036-L-4			C-1736-6-6-F		

Exact Thermal and Dimensional Interchanges - Service Parts also Interchangeable
 "5A" prefix indicates admiralty brass tubes. "2A" prefix in place of the "5A" prefix indicates copper tubes in BASCO units and is interchangeable with TTPL "C" series units.

Basco to Thermal Transfer Products

Water Cooled Type 500 Cross Reference

BASCO				THERMAL TRANSFER		
Current Model Number	Original Model Number	Tube Count	Surface Area (Ft.)	Model Number	Tube Count	Surface Area (Ft.)
5A-01A-08-048	08048-S-1	232	91.1	C-1748-4-6-0	240	94.2
5A-03A-08-048	08048-S-2			C-1748-4-6-T		
5A-05A-08-048	08048-S-4			C-1748-4-6-F		
5A-02A-08-048	08048-L-1			C-1748-7-6-0		
5A-04A-08-048	08048-L-2			C-1748-7-6-T		
5A-06A-08-048	08048-L-4			C-1748-7-6-F		
5A-01A-08-060	08060-S-1	232	113.8	C-1760-4.5-6-0	240	117.8
5A-03A-08-060	08060-S-2			C-1760-4.5-6-T		
5A-05A-08-060	08060-S-4			C-1760-4.5-6-F		
5A-02A-08-060	08060-L-1			C-1760-7-6-0		
5A-04A-08-060	08060-L-2			C-1760-7-6-T		
5A-06A-08-060	08060-L-4			C-1760-7-6-F		
5A-01A-08-072	08072-S-1	232	136.6	C-1772-4.5-6-0	240	141.4
5A-03A-08-072	08072-S-2			C-1772-4.5-6-T		
5A-05A-08-072	08072-S-4			C-1772-4.5-6-F		
5A-02A-08-072	08072-L-1			C-1772-8-6-0		
5A-04A-08-072	08072-L-2			C-1772-8-6-T		
5A-06A-08-072	08072-L-4			C-1772-8-6-F		

Exact Thermal and Dimensional Interchanges - Service Parts also Interchangeable

"5A" prefix indicates admiralty brass tubes. "2A" prefix in place of the "5A" prefix indicates copper tubes in BASCO units and is interchangeable with TTPL "C" series units.

Bell and Gossett to Thermal Transfer Products

Water Cooled CHX Series Cross Reference

BELL AND GOSSETT		THERMAL TRANSFER		BELL AND GOSSETT		THERMAL TRANSFER		
Model Number	Surface Area (Ft.)	Model Number	Surface Area (Ft.)	Model Number	Surface Area (Ft.)	Model Number	Surface Area (Ft.)	
CHX-308-S-1	2.5	A-608-1-4-0	2.6	CHX-524-S-1	15.7	A-1024-2-6-0	15.7	
CHX-308-L-1		A-608-2-4-0		CHX-524-L-1		A-1024-4-6-0		
CHX-308-S-2		A-608-1-4-T		CHX-524-S-2		A-1024-2-6-T		
CHX-308-L-2		A-608-2-4-T		CHX-524-L-2		A-1024-4-6-T		
CHX-308-S-4		A-608-1-4-F		CHX-524-S-4		A-1024-2-6-F		
CHX-308-L-4		A-608-2-4-F		CHX-524-L-4		A-1024-4-6-F		
CHX-314-S-1	4.3	A-614-1.5-4-0	.6	CHX-536-S-1	23.6	A-1036-2-6-0	23.6	
CHX-314-L-1		A-614-4-4-0		CHX-536-L-1		A-1036-4-6-0		
CHX-314-S-2		A-614-1.5-4-T		CHX-536-S-2		A-1036-2-6-T		
CHX-314-L-2		A-614-4-4-T		CHX-536-L-2		A-1036-4-6-T		
CHX-314-S-4		A-614-1.5-4-F		CHX-536-S-4		A-1036-2-6-F		
CHX-314-L-4		A-614-4-4-F		CHX-536-L-4		A-1036-4-6-F		
CHX-324-S-1	7.3	A-624-2-4-0	7.9	CHX-624-S-1	22.8	A-1224-2-6-0	23.7	
CHX-324-L-1		A-624-4-4-0		CHX-624-L-1		A-1224-4-6-0		
CHX-324-S-2		A-624-2-4-T		CHX-624-S-2		A-1224-2-6-T		
CHX-324-L-2		A-624-4-4-T		CHX-624-L-2		A-1224-4-6-T		
CHX-324-S-4		A-624-2-4-F		CHX-624-S-4		A-1224-2-6-F		
CHX-324-L-4		A-624-4-4-F		CHX-624-L-4		A-1224-4-6-F		
CHX-414-S-1	7.6	A-814-1.5-4-0	9.3	CHX-636-S-1	34.2	A-1236-3-6-0	35.3	
CHX-414-L-1		A-814-3-4-0		CHX-636-L-1		A-1236-6-6-0		
CHX-414-S-2		A-814-1.5-4-T		CHX-636-S-2		A-1236-3-6-T		
CHX-414-L-2		A-814-3-4-T		CHX-636-L-2		A-1236-6-6-T		
CHX-414-S-4		A-814-1.5-4-F		CHX-636-S-4		A-1236-3-6-F		
CHX-414-L-4		A-814-3-4-F		CHX-636-L-4		A-1236-6-6-F		
CHX-424-S-1	13.1	A-824-2-4-0	14.4	CHX-648-S-1	45.6	A-1248-3-6-0	47.1	
CHX-424-L-1		A-824-4-4-0		CHX-648-L-1		A-1248-6-6-0		
CHX-424-S-2		A-824-2-4-T		CHX-648-S-2		A-1248-3-6-T		
CHX-424-L-2		A-824-4-4-T		CHX-648-L-2		A-1248-6-6-T		
CHX-424-S-4		A-824-2-4-F		CHX-648-S-4		A-1248-3-6-F		
CHX-424-L-4		A-824-4-4-F		CHX-648-L-4		A-1248-6-6-F		
CHX-436-S-1	19.7	A-836-2-4-0	21.2	CHX-660-S-1	57.0	A-1260-4-6-0	58.9	
CHX-436-L-1		A-836-4-4-0		CHX-660-L-1		A-1260-6-6-0		
CHX-436-S-2		A-836-2-4-T		CHX-660-S-2		A-1260-4-6-T		
CHX-436-L-2		A-836-4-4-T		CHX-660-L-2		A-1260-6-6-T		
CHX-436-S-4		A-836-2-4-F		CHX-660-S-4		A-1260-4-6-F		
CHX-436-L-4		A-836-4-4-F		CHX-660-L-4		A-1260-6-6-F		
CHX-514-S-1	9.2	A-1014-1.5-6-0	9.2					
CHX-514-L-1		A-1014-3-6-0						
CHX-514-S-2		A-1014-1.5-6-T						
CHX-514-L-2		A-1014-3-6-T						
CHX-514-S-4		A-1014-1.5-6-F						
CHX-514-L-4		A-1014-3-6-F						

Approximate thermal and dimensional interchanges (dimensions within 3/8", CHX-400 Series has different connection sizes). Mounting brackets can be rotated on TTPL models to more closely match those of the CHX Series.

Blissfield to Thermal Transfer Products

Air Cooled Cross Reference

BLISSFIELD		THERMAL TRANSFER	
Approximate Overall		Approximate Overall	
Part Number	Dimensions	Part Number	Dimensions
60462	8 x 10 x 1	DH-08-41-2	8 x 13.5 x 1.5
63002	10.5 x 15 x 2	DH-095-1-2	8.5 x 18 x 1.5
63058	36.5 x 28 x 2	DH-359-1-2	31 x 30 x 1.5
63059	36.5 x 28 x 3	DH-370-1-2	31 x 36 x 1.5
63078	36.5 x 28 x 2	DH-359-2-2	31 x 30 x 1.5
65024	9 x 27 x 2	DH-106-1-2	8.5 x 21 x 1.5
65025	8 x 25 x 2	DH-095-1-2	8.5 x 18 x 1.5
65027	24.5 x 24.5 x 2	DH-326-1-2	25 x 24 x 1.5
65028	9.5 x 16.5 x 3	DH-502-1-2	6 x 15 x 3
65029	20 x 20 x 2	DH-216-1-2	12.5 x 24 x 1.5
65031	20 x 24 x 2	DH-238-1-2	16.5 x 24 x 1.5
65032	13 x 20 x 2	DH-194-1-2	12.5 x 18 x 1.5
65033	24 x 26 x 2	DH-236-1-2	25 x 24 x 1.5
65034	9 x 26 x 2	DH-095-1-2	8.5 x 18 x 1.5
65069	30 x 31 x 2	DH-359-1-2	31 x 30 x 1.5
65077	26.5 x 27 x 2	DH-326-2-2	25 x 24 x 1.5
65082	19 x 20 x 2	DH-238-1-2	16.5 x 24 x 1.5
69002	7 x 16 x 1.5	DH-051-1-2	4.5 x 15 x 1.5
69003	9 x 19 x 1.5	DH-062-1-2	6.5 x 15 x 1.5

Non-dimensional interchanges for reference only. In most cases the Thermal Transfer performance is greater than the Blissfield model replaced. Refer to DH Series for additional information.

Dunham-Bush to Thermal Transfer Products

Air Cooled Cross Reference

DUNHAM-BUSH		THERMAL TRANSFER	
Model Series	Model Number	Model Number	Number of Passes
10 Series	DB-12	AO-5/AOC-19	2/1 Pass Only
	DB-21	AO-10/AOC-22	2/1 Pass Only
	DB-22	AO-20/AOC-24	1/1 Pass Only
	DB-31	AO-30/AOC-37	1/1 Pass Only
	DB-32	AO-35/AOC-50	1/1 Pass Only
	DB-206	AO-20	1
100 Series	DB-208	AO-25	1
	DB-210	AO-35	1
	DB-212	AO-40	1
	DB-214	AOVH-35	1
	DB-308	AO-35	1
	DB-312	AOVH-35	1
	DB-314	AOVH-40	1
	DB-318	AOL-1200	1 Pass Only
	DB-321	AOL-1600	
	DB-327	AOL-2500	
	DB-330	AOL-3000	
	DB-410	AOVH-35	
	DB-421	AOL-1600/AOL-3000	1 or 2 (depending on flow)
	DB-430	AOL-3000	1 Pass Only
	DB-433	AOL-3500	1 Pass Only (flow of 45-200 GPM)
DC Series	DB-00341DC	AOC-24	
	DB-00343DC	AOC-22	
	DB-00345DC	AOC-24	
	DB-01322DC	AOC-33	1 Pass Only
	DB-02162	AOC-37	
	DB-75699	AOC-37	

Models are Approximate Thermal, Non-Dimensional

Dunham-Bush to Thermal Transfer Products

Air Cooled Cross Reference

DUNHAM-BUSH		THERMAL TRANSFER		
Heat Exchanger Only Part Number	Kit Includes Mounting Brackets Part Number	Heat Exchanger Only Model Number	Quantity	Mounting Brackets Part Number
10215-S1-0346	DB-1215	DH-051-1-1	2	L-84741
10324-S1-0351	DB-1230	DH-084-1-1	4	
10324-R1-0339	DB-1231	DH-084-4-1	4	
10418-S1-0246	DB-1232	DH-095-1-1	4	
10418-R1-0916	DB-1233	DH-095-4-1	4	
10621-S1-0924	DB-1234	DH-205-1-1	4	
10824-S1-75698	DB-1236	DH-238-1-1	6	
10824-R1-71911	DB-1237	DH-238-4-1	6	
10318-R1-0338	DB-1238	DH-073-4-1	4	
10318-S1-0350	DB-1240	DH-073-1-1	4	
10421-S1-0349	DB-1241	DH-106-1-1	4	
10421-R1-0337	DB-1242	DH-106-4-1	4	
10412-S1-1773	DB-1247	DH-08-11-1	4	
10425-R1-1231	DB-1248	DH-117-4-1	4	
10624-S2-0336	DB-1249	DH-216-83792	Mounting Brackets Included	
10624-S1-0348	DB-1260	DH-216-1-1	4	K-84741
10624-R1-0340	DB-1261	DH-216-4-1	4	
10618-R1-0344	DB-1267	DH-194-4-1	4	
10618-S1-0343	DB-1268	DH-194-1-1	4	
10924-S2-0335	DB-1269	DH-249-83793	Mounting Brackets Included	
11230-S2P-0718	DB-1271	DH-337-83795	Mounting Brackets Included	
11536-S1-1770	DB-1272	DH-370-1-1	8	L-84741
11536-R1-1518	DB-1273	DH-370-4-1	8	
11433-S1-0558	DB-1277	DH-96226	Mounting Brackets Included	
10924-S1-0345	DB-1290	DH-249-1-1	6	L-84741
10924-R1-0341	DB-1291	DH-249-4-1	6	
11224-S1-0347	DB-1292	DH-326-1-1	8	
11224-S2-0332	DB-1293	DH-326-83794	Mounting Brackets Included	
11224-R1-0342	DB-1294	DH-326-4-1	8	L-84741
11524-R1-52024	DB-1295	DH-348-4-1	8	
11530-R1-76866	DB-1296	DH-359-4-1*	8	
11830-R1-66951	DB-1297	DH-425-4-1*	4	
11840-R1-75707	DB-1298	DH-436-4-1*	4	
110240-S2P-0683	DB-1299	DH-96227	Mounting Brackets Included	
20618-S1-60943	DB-2268	DH-513-1-1*	Mounting Tabs Included	
20924-S1-1322	DB-2289	DH-524-96229*		
20924-S1A-75700	DB-2290	CONSULT FACTORY		
20924-R2A-76699	DB-2291			
21224-S2A-0615	DB-2292			
22148-T1-76887	DB-2293	DH-96230*	Mounting Tabs Included	
21830-T1-75706	DB-2294	DH-626-1-1*		
21524-S2A-0541	DB-2295	CONSULT FACTORY		
21833-T1-75710	DB-2296	DH-96232*	Mounting Tabs Included	
21842-T1-75708	DB-2297	DH-649-1-1*		
21848-T1-75709	DB-2298	DH-96233*		
22145-T1-56406	DB-2299	DH-96234*		
11524-S1-0412	DB-2305	DH-348-1-1	8	L-84741
11530-S1-57736	DB-2306	DH-359-1-1	8	
11833-R1-0734	DB-2307	DH-96231	Mounting Brackets Included	
21840-T1-0739	DB-2308	DH-649-1-1*	Mounting Tabs Included	
12042-R1-0808	DB-2312	DH-447-4-1*	4	

Models are thermally equivalent, approximate dimensional interchanges
 *Thermal and non-dimensional interchanges

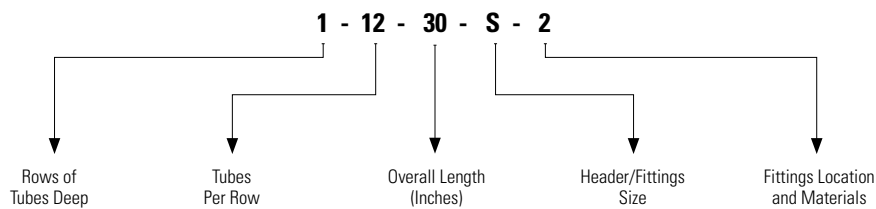
Hayden and Dunham-Bush to Thermal Transfer Products

Air Cooled Cross Reference

HAYDEN		DUNHAM-BUSH/KOOL-MOR		THERMAL TRANSFER	
Model Number	Face Areas(Sq. Ft)	Model Number	Face Areas (Sq. Ft)	Model Number	Face Areas (Sq. Ft)
10318S1/R1	.6	DB-1238/DB-1240	.57/.59	M-10	.60
10324S1/R1	.8	DB-1230	.84	M-15	.81
10418S1/R1		DB-1231	.82		
10421S1/R1	.93	DB-1241/DB-1242	.96/.93	M-20	1.21
10424S1/R1	1.1	DB-1267/DB-1268	1.1/1.5		
10618S1/R1	1.2				
10621S1/R1	1.4				
10724S1/R1	1.9			M-25	2.56
10824S1/R1	2.1				
10924S1/S2/R1	2.4	DB-1269/DB-1290/DB-1291	2.5/2.4/2.5	M-30	3.25
11024S2	2.7	DB-1299	2.7		
11224S1/S2/R1	3.2	DB-1292/DB-1293/DB-1294	3.2/3.2/3.1	M-35	4.06
11230S2	4.0	DB-1271	4.2		
11524S1/R1			DB-1295/DB-2305	3.9/4.0	M-40
11530S1/R1	5.0	DB-1296/DB-2306	5.2/5.3		
11536S1/R1	6.0	DB-1277/DB-1297	5.5/5.9		
11830S1/R1			DB-2307	6.7	
11840S1/R1	8.0	DB-1298/DB-2308	8.4/8.2	M-45	8.88
12042S1/R1	9.3	DB-2312	9.9		

Note: Cross referenced models are based on similar face areas. Physical sizes may not be equal.

Hayden Model Number (Coding)



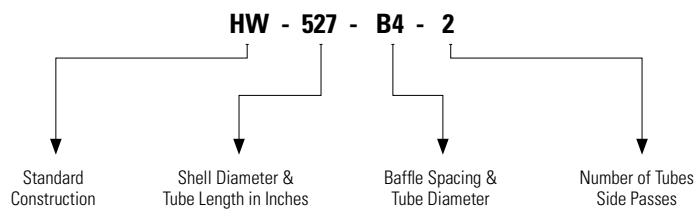
Hayden to Thermal Transfer Products

Water Cooled Cross Reference

Hayden Model Number	Thermal Transfer Model Number
HW-209-A4-1	B-401-A4-O
HW-218-A4-1	B-402-A4-O
HW-309-A4-1	B-701-A4-O
HW-309-A4-2	B-701-A4-T
HW-309-A4-4	B-701-A4-F
HW-318-B4-1	B-702-B4-O
HW-318-B4-2	B-702-B4-T
HW-318-B4-4	B-702-B4-F
HW-327-B4-1	B-703-B4-O
HW-327-B4-2	B-703-B4-T
HW-327-B4-4	B-703-B4-F
HW-327-C4-1	B-703-C4-O
HW-327-C4-2	B-703-C4-T
HW-327-C4-4	B-703-C4-F
HW-518-B4-1	B-1002-B4-O
HW-518-B4-2	B-1002-B4-F
HW-518-B4-4	B-1002-B4-T
HW-527-B4-1	B-1003-B4-O
HW-527-B4-2	B-1003-B4-T
HW-527-B4-4	B-1003-B4-F

Thermal Interchanges Only—Not Dimensionally

Hayden Model Number (Coding)



Hayden to Thermal Transfer Products

Air Cooled Cross Reference

		HAYDEN		THERMAL TRANSFER			
Model Series	Model Number	Number of Passes	Flow Range	Model Number	Number of Passes	Flow Range	
Temp-Toller Industrial Series	IND-108	1	4-32	AOVH-15	1	8-160	
		2	2-16		2	4-60	
	IND-208	1	8-64	AOVH-20	1	10-160	
		2	4-32		2	4-80	
	IND-113	1	6-52	AOVH-25	1	12-200	
		2	3-24		2	4-80	
	IND-213	1	12-105	AOVH-35	1	14-200	
		2	8-52		2	4-80	
	IND-313	1	20-155	AOVH-35	1	16-220	
		2	10-75		2	6-80	
	Temp-Toller Hundred Series	TT-206	1	6-48	AOVH-10	1	6-160
			2	3-21		2	4-60
TT-208		1	8-64	AOVH-20	1	10-160	
		2	4-31		2	4-80	
TT-308		1	12-96	AOVH-20	1	10-160	
		2	6-47		2	4-80	
TT-210		1	10-80	AOVH-25	1	12-200	
		2	5-40		2	4-80	
TT-212		1	12-96	AOVH-30	1	14-200	
		2	6-48		2	4-80	
TT-214		1	14-112	AOVH-35	1	16-220	
		2	6-56		2	6-80	
TT-314		1	20-165	AOVH-40	1	18-230	
		2	10-83		2	8-80	
TT-318		1	30-210	AOL-950	1 Pass Only	23-150	
		2	12-105	AOVH-40		18-230	
TT-418		1	45-285	AOL-1200		23-150	
		2	15-145				
Temp-Toller Jumbo Series	TT-321	1	30-250	AOL-1600	1 Pass Only	30-165	
		2	15-125				
	TT-324	1	35-290	AOL-2000		30-200	
		2	15-220				
	TT-327	1	40-330	AOL-2500		35-225	
		2	20-165				
	TT-430	1	60-480	AOL-3500		45-310	
		2	30-240				

Flow ranges are in Gallons Per Minute (GPM). All models are Approximate Thermal, Non-dimensional.

Hayden to Thermal Transfer Products

Air Cooled Cross Reference

NPT PORTS			SAE PORTS	
Hayden Model Number	Hayden Part Number	Thermal Transfer Model Number	Hayden Part Number	Thermal Transfer Model Number
10215	001243	DH-051-1-1	016000	DH-051-2-1
10315	002514	DH-062-1-1	016002	DH-062-2-1
10318	001269	DH-073-1-1	016004	DH-073-2-1
10324	001563	DH-084-1-1	016005	DH-084-2-1
10418	003109	DH-095-1-1	016012	DH-095-2-1
10421	001564	DH-106-1-1	012010	DH-106-2-1
10424	001810	DH-117-1-1	016008	DH-117-2-1
10618	001251	DH-194-1-1	016013	DH-194-2-1
10624	001267	DH-216-1-1	016017	DH-216-2-1
10724	001264	DH-227-1-1	016020	DH-227-2-1
10924	001260	DH-249-1-1	016024	DH-249-2-1
11224	001778	DH-326-1-1	016032	DH-326-2-1
11230	001695	DH-337-1-1	016030	DH-337-2-1
11524	001865	DH-348-1-1	016038	DH-348-2-1
11530	001860	DH-359-1-1	016036	DH-359-2-1
11536	001861	DH-370-1-1	016034	DH-370-2-1
11830	001788	DH-425-1-1*	016039	DH-425-2-1*
12042	002248	DH-447-1-1*	016044	DH-447-2-1*
20215	025362	DH-502-1-1*	025363	DH-502-2-1*
20618	025348	DH-513-1-1*	025364	DH-513-2-1*
20924	025365	DH-524-1-1*	025366	DH-524-2-1*
21224	025367	DH-535-1-1*	025368	DH-535-2-1*
21830	025817	DH-626-1-1*	020111	DH-626-2-1*
21842	025818	DH-649-1-1*	020112	DH-649-2-1*
22042	025819	DH-670-1-1*	020113	DH-670-2-1*

All models are thermal and dimensional interchanges unless indicated.

*Thermal, very close dimensional interchanges.

Hayden to Thermal Transfer Products

Air Cooled Cross Reference

Hayden Number	Thermal Transfer Model Number
10215-S1	DH-051-1
10315-S1	DH-062-1
10318-S1	DH-073-1
10324-S1	DH-084-1
10418-S1	DH-095-1
10421-S1	DH-106-1
10424-S1	DH-117-1
10618-S1	DH-194-1
10621-S1	DH-205-1
10624-S1	DH-216-1
10724-S1	DH-227-1
10824-S1	DH-238-1
10924-S1	DH-249-1
11224-S1	DH-326-1
11230-S1	DH-337-1
11524-S1	DH-348-1
11530-S1	DH-359-1
11536-S1	DH-370-1
11830-S1	DH-425-1
11840-S1	DH-436-1
12042-S1	DH-447-1

Hayden Number	Thermal Transfer Model Number
10215-V1	DH-051-2
10315-V1	DH-062-2
10318-V1	DH-073-2
10324-V1	DH-084-2
10418-V1	DH-095-2
10421-V1	DH-106-2
10424-V1	DH-117-2
10618-V1	DH-194-2
10621-V1	DH-205-2
10624-V1	DH-216-2
10724-V1	DH-227-2
10824-V1	DH-238-2
10924-V1	DH-249-2
11224-V1	DH-326-2
11230-V1	DH-337-2
11524-V1	DH-348-2
11530-V1	DH-359-2
11536-V1	DH-370-2
11830-V1	DH-425-2
11840-V1	DH-436-2
12042-V1	DH-447-2

Hayden Number	Thermal Transfer Model Number
10215-R1	DH-051-4
10315-R1	DH-062-4
10318-R1	DH-073-4
10324-R1	DH-084-4
10418-R1	DH-095-4
10421-R1	DH-106-4
10424-R1	DH-117-4
10618-R1	DH-194-4
10621-R1	DH-205-4
10624-R1	DH-216-4
10724-R1	DH-227-4
10824-R1	DH-238-4
10924-R1	DH-249-4
11224-R1	DH-326-4
11230-R1	DH-337-4
11524-R1	DH-348-4
11530-R1	DH-359-4
11536-R1	DH-370-4
11830-R1	DH-425-4
11840-R1	DH-436-4
12042-R1	DH-447-4

Hayden Number	Thermal Transfer Model Number
10215-W1	DH-051-5
10315-W1	DH-062-5
10318-W1	DH-073-5
10324-W1	DH-084-5
10418-W1	DH-095-5
10421-W1	DH-106-5
10424-W1	DH-117-5
10618-W1	DH-194-5
10621-W1	DH-205-5
10624-W1	DH-216-5
10724-W1	DH-227-5
10824-W1	DH-238-5
10924-W1	DH-249-5
11224-W1	DH-326-5
11230-W1	DH-337-5
11524-W1	DH-348-5
11530-W1	DH-359-5
11536-W1	DH-370-5
11830-W1	DH-425-5
11840-W1	DH-436-5

Hayden Number	Thermal Transfer Model Number
12042-W1	DH-447-5
20215-S1	DH-502-1
20618-S1	DH-513-1
20624-S1	DH-519-1
20924-S1	DH-524-1
21224-S1	DH-535-1
21830-T1	DH-626-1
21842-T1	DH-649-1
22042-T1	DH-670-1
20215-V1	DH-502-2
20618-V1	DH-513-2
20624-V1	DH-519-2
20924-V1	DH-524-2
21224-V1	DH-535-2
21830-Y1	DH-626-2
21842-Y1	DH-649-2
22042-Y1	DH-670-2

The Thermal Transfer models indicated are both thermally and dimensionally interchangeable with the Hayden models they replace.

HiRoss to Thermal Transfer Products

Air Cooled Aftercoolers

HiRoss Model Number	SCFM*	Thermal Transfer Model Number	SCFM*
A00500B0	30	AA-50	35
A01000B0	50	AA-50	50
A02000B0	100	AA-120	100
A03000B0	125	AA-120	120
A05000B0	210	AA-240	240
A0803000	300	AA-300	300
A1203000	590	AHP-725	640
A1603000	670	AHP-725	640
A2003000	800	AHP-725	725
A2403000	1000	AHP-950	950
A3203000	1250	AHP-1200	1200
A4003000	1500	AHP-1600	1600
A4803000	2000	AHP-2000	2000
A6403000	2500	AHP-2500	2500
A7503000	2800	AHP-3000	3000

*Inlet air temperature 250° cooled to within 15° approach 100 psig.

Water Cooled Aftercoolers

HiRoss Model Number	Two Stage	Rotary	Thermal Transfer Model Number	Two Stage	Rotary
W0035	52	74	AB-404-A4-0	80	110
W0045	104	148	AB-405-B4-0	150	205
W0055	182	259	AB-705-B4-0	310	439
W0065	312	444	AB-705-B4-0	310	439
W0110	494	703	AB-1006-B6-0	440	654
W0160	702	999	AB-1206-C6-0	640	955
W0210	806	1147	AB-1206-C6-0	640	955
W0270	1092	1554	AB-1207-C6-0	1250	1690
W0350	1430	2035	AB-1606-C6-0	1600	2280
W0420	1664	2368	AB-1606-C6-0	1600	2280

Cross Reference Thermally Interchangeable-Not Dimensionally
 Rotary Inlet temperature 190°F cooled to within 15°F of inlet water temperature.
 2 Stage inlet temperature 250°F cooled to within 15°F of inlet water temperature.
 Compressed air at 100 psig.

Hydac to Thermal Transfer Products

Approximate Thermal, Non-Dimensional Interchanges

Hydac Model Series	Model Number	Thermal Transfer Model Number*
ELD (DC Electric)	ELD-1	MA-4
	ELD-2	MA-18
	ELD-3	MA-32
	ELD-4.5	MA-48
	ELD-5	MA-232
	ELD-6	MA-248
OK (AC Electric)	OK-1H	BOL-8
	OK-2S	BOL-8
	OK-2H	BOL-8
	OK-3S	BOL-8
	OK-3H	BOL-16
	OK-4L	BOL-16
	OK-4S	BOL-16
	OK-5L	BOL-400
	OK-5S	BOL-400
	OK-6L	BOL-30
	OK-6S	BOL-30
	OK-7L	BOL-725
	OK-7S	BOL-950
	OK-8L	BOL-725
	OK-8S	BOL-950
	OK-9L	BOL-950
OK-10L	BOL-1600	
OK-11L	AOL-2500	
ELH** (Hydraulic)	ELH-2	BOL-8
	ELH-3	BOL-16
	ELH-4	BOL-400
	ELH-5	BOL-30
	ELH-6	BOL-725
	ELH-8	BOL-950
	ELH-9	BOL-950
	ELH-10	BOL-1600
ELH-11	AOL-2500	

*Full model code must contain connection type and motor code. For connections:
 -1 for NPT, -2 for SAE, -3 for BSPP. For Motors: -2 for 1PH, -3 for 3 PH, 4A for 12V, 4B for 24V,
 -9 for Hydraulic. EX. BOL-30-2-3PH

**Crossovers based on heat removals with equal fan RPMs. Hydraulic Motor Operating
 Conditions vary from Hydac Specifications

ITT Standard to Thermal Transfer Products

Water Cooled BCF Series Cross Reference

ITT OR AMERICAN STANDARD			THERMAL TRANSFER		
Model Number	Tube Count	Surface Area (Ft.2)	Model Number	Tube Count	Surface Area (Ft.2)
5-030-02-008-001	28	1.2	A-408-.75-4-O	31	1.35
5-030-02-008-002			A-408-2-4-O		
5-030-03-008-001	56	2.4	A-608-1-4-O	60	2.6
5-030-03-008-002			A-608-2-4-O		
5-030-03-008-003			A-608-1-4-T		
5-030-03-008-004			A-608-2-4-T		
5-030-03-008-005			A-608-1-4-F		
5-030-03-008-006			A-608-2-4-F		
5-030-03-014-001			56		
5-030-03-014-002	A-614-4-4-O				
5-030-03-014-003	A-614-1.5-4-T				
5-030-03-014-004	A-614-4-4-T				
5-030-03-014-005	A-614-1.5-4-F				
5-030-03-014-006	A-614-4-4-F				
5-030-03-024-001	56	7.4		A-624-2-4-O	60
5-030-03-024-002			A-624-4-4-O		
5-030-03-024-003			A-624-2-4-T		
5-030-03-024-004			A-624-4-4-T		
5-030-03-024-005			A-624-2-4-F		
5-030-03-024-006			A-624-4-4-F		
5-030-04-014-001	108	8.3	A-814-1.5-4-O	108	8.3
5-030-04-014-002			A-814-3-4-O		
5-030-04-014-003			A-814-1.5-4-T		
5-030-04-014-004			A-814-3-4-T		
5-030-04-014-005			A-814-1.5-4-F		
5-030-04-014-006			A-814-3-4-F		
5-030-04-024-001	108	14.1	A-824-2-4-O	108	14.1
5-030-04-024-002			A-824-4-4-O		
5-030-04-024-003			A-824-2-4-T		
5-030-04-024-004			A-824-4-4-T		
5-030-04-024-005			A-824-2-4-F		
5-030-04-024-006			A-824-4-4-F		

ITT OR AMERICAN STANDARD			THERMAL TRANSFER		
Model Number	Tube Count	Surface Area (Ft.2)	Model Number	Tube Count	Surface Area (Ft.2)
5-030-04-036-001	108	21.2	A-836-2-4-O	108	21.2
5-030-04-036-002			A-836-4-4-O		
5-030-04-036-003			A-836-2-4-T		
5-030-04-036-004			A-836-4-4-T		
5-030-04-036-005			A-836-2-4-F		
5-030-04-036-006			A-836-4-4-F		
5-030-05-014-001	80	9.1	A-1014-1.5-6-O	80	9.1
5-030-05-014-002			A-1014-3-6-O		
5-030-05-014-003			A-1014-1.5-6-T		
5-030-05-014-004			A-1014-3-6-T		
5-030-05-014-005			A-1014-1.5-6-F		
5-030-05-014-006	A-1014-3-6-F				
5-030-05-024-001	80	16	A-1024-2-6-O	80	16
5-030-05-024-002			A-1024-4-6-O		
5-030-05-024-003			A-1024-2-6-T		
5-030-05-024-004			A-1024-4-6-T		
5-030-05-024-005			A-1024-2-6-F		
5-030-05-024-006			A-1024-4-6-F		
5-030-05-036-001	80	24	A-1036-2-6-O	80	24
5-030-05-036-002			A-1036-4-6-O		
5-030-05-036-003			A-1036-2-6-T		
5-030-05-036-004			A-1036-4-6-T		
5-030-05-036-005			A-1036-2-6-F		
5-030-05-036-006	A-1036-4-6-F				
5-030-06-024-001	116	23	A-1224-2-6-O	120	23.7
5-030-06-024-002			A-1224-4-6-O		
5-030-06-024-003			A-1224-2-6-T		
5-030-06-024-004			A-1224-4-6-T		
5-030-06-024-005			A-1224-2-6-F		
5-030-06-024-006			A-1224-4-6-F		

Exact Thermal and Dimensional Interchanges - Service Parts also Interchangeable

ITT Standard to Thermal Transfer Products

Water Cooled BCF Series Cross Reference

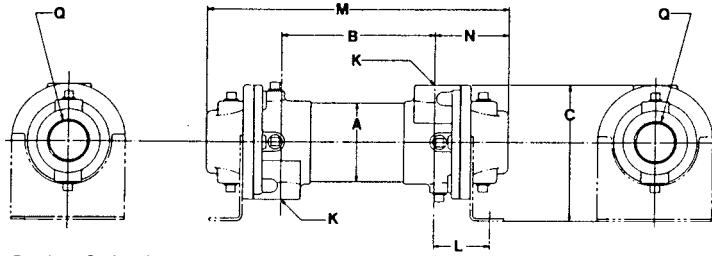
ITT OR AMERICAN STANDARD			THERMAL TRANSFER		
Model Number	Tube Count	Surface Area (Ft.2)	Model Number	Tube Count	Surface Area (Ft.2)
5-030-06-036-001	116	34	A-1236-3-6-O	120	35.3
5-030-06-036-002			A-1236-6-6-O		
5-030-06-036-003			A-1236-3-6-T		
5-030-06-036-004			A-1236-6-6-T		
5-030-06-036-005			A-1236-3-6-F		
5-030-06-036-006			A-1236-6-6-F		
5-030-06-048-001	116	45	A-1248-3-6-O	120	47.1
5-030-06-048-002			A-1248-6-6-O		
5-030-06-048-003			A-1248-3-6-T		
5-030-06-048-004			A-1248-6-6-T		
5-030-06-048-005			A-1248-3-6-F		
5-030-06-048-006			A-1248-6-6-F		
5-030-06-060-001	116	56	A-1260-4-6-O	120	58.9
5-030-06-060-002			A-1260-6-6-O		
5-030-06-060-003			A-1260-4-6-T		
5-030-06-060-004			A-1260-6-6-T		
5-030-06-060-005			A-1260-4-6-F		
5-030-06-060-006			A-1260-6-6-F		
5-030-08-024-001	210	41	A-1624-2-6-O	210	41
5-030-08-024-002			A-1624-6-6-O		
5-030-08-024-003			A-1624-2-6-T		
5-030-08-024-004			A-1624-6-6-T		
5-030-08-024-005			A-1624-2-6-F		
5-030-08-024-006			A-1624-6-6-F		

ITT OR AMERICAN STANDARD			THERMAL TRANSFER		
Model Number	Tube Count	Surface Area (Ft.2)	Model Number	Tube Count	Surface Area (Ft.2)
5-030-08-036-001	210	62	A-1636-3-6-O	210	62
5-030-08-036-002			A-1636-6-6-O		
5-030-08-036-003			A-1636-3-6-T		
5-030-08-036-004			A-1636-6-6-T		
5-030-08-036-005			A-1636-3-6-F		
5-030-08-036-006			A-1636-6-6-F		
5-030-08-048-001	210	82	A-1648-3-6-O	210	82
5-030-08-048-002			A-1648-6-6-O		
5-030-08-048-003			A-1648-3-6-T		
5-030-08-048-004			A-1648-6-6-T		
5-030-08-048-005			A-1648-3-6-F		
5-030-08-048-006			A-1648-6-6-F		
5-030-08-060-001	210	103	A-1660-4-6-O	210	103
5-030-08-060-002			A-1660-6-6-O		
5-030-08-060-003			A-1660-4-6-T		
5-030-08-060-004			A-1660-6-6-T		
5-030-08-060-005			A-1660-4-6-F		
5-030-08-060-006			A-1660-6-6-F		
5-030-08-072-001	210	124	A-1672-4-6-O	210	124
5-030-08-072-002			A-1672-6-6-O		
5-030-08-072-003			A-1672-4-6-T		
5-030-08-072-004			A-1672-6-6-T		
5-030-08-072-005			A-1672-4-6-F		
5-030-08-072-006			A-1672-6-6-F		

Exact Thermal and Dimensional Interchanges - Service Parts also Interchangeable

ITT Standard HCFQ to Thermal Transfer Products

Dimensions



*Note: Mounting Brackets Optional

Model	A	B	C	K NPT	L	M	N	Q NPT
B-218-75899	2.13	19.63	3.50	.50	1.72	23.25	1.81	1.00
B-227-75900		28.63				36.38		
B-248-77231		46.63				54.38		
B-254-77232		52.63				60.38		
B-327-75901	3.66	23.75	6.25	1.00	2.69	31.16	3.70	2.00
B-336-75902		37.75				45.16		2.50

*Heat transfer rates are based on two stage compression, 250°F inlet at 100 PSI.

Water Cooled Cross Reference

WATER COOLED AFTERCOOLERS

ITT Standard Model Number	SCFM Capacities*	Thermal Transfer Model Number
5-142-02-021-001	40	B-218-75899
5-142-02-030-001	110	B-227-75900
5-142-02-048-001	170	B-248-77231
5-142-02-054-001	190	B-254-77232
5-142-03-022-001	145	B-327-75901
5-142-03-036-011	280	B-336-75902

*Heat transfer rates are based on two stage compression, 250°F inlet at 100 PSI.

Karmazin to Thermal Transfer

Air Cooled Cross Reference

KARMAZIN

THERMAL TRANSFER

Approximate Overall		Approximate Overall	
Part Number	Dimensions	Part Number	Dimensions
207-OA1	8 x 26 x 2	DH-051-2-2	4.5 x 15 x 1.5
212-OA1	13 x 21 x 2	DH-062-2-2	6.5 x 15 x 1.5
216-OA1	18.5 x 20.5 x 2	DH-194-2-2	12.5 x 18 x 1.5
216-2A1	16 x 21.5 x 2	DH-227-2-2	14.5 x 24 x 1.5
218-OA1	19.5 x 24 x 2	DH-216-2-2	12.5 x 24 x 1.5
224-OA1	25.5 x 27 x 2	DH-326-2-2	25 x 24 x 1.5
326-OA1	27.5 x 31 x 3	DH-425-2-2	37 x 30 x 1.5
326-O**	27.5 x 31 x 4.5	DH-370-2-2	31 x 36.5 x 1.5
426-OA1	27.5 x 32 x 4	DH-649-2-2	38.5 x 42 x 3
426-O**	27.5 x 31 x 4.5	DH-370-2-2	31 x 36.5 x 1.5

**Optional Circuit

Non-dimensional interchanges for reference only. In most cases the Thermal Transfer performance is greater than the Karmazin model it replaces. Refer to DH Series for additional information.

Modine to Thermal Transfer Products

After Coolers Cross Reference

AIR COOLED AFTERCOOLERS

Modine Model Number	SCFM	Thermal Transfer Model Number	SCFM
AB-128	55	AA-80	65
AB-129	160	AA-150	150
AB-130	270	AA-240	240
AB-131	415	AHP-400	
AB-132X	500	AHP-725	450
AB-062A	340	AA-300	300
AB-064A	450	AHP-400	450
AB-066A	650	AHP-725	640
AB-070A	1000	AHP-950	950
AB-074AF	1240	AHP-1200	1200
AB-076AF	2360	AHP-2500	2500

COMBINATION OIL COOLER AND AFTERCOOLERS

Modine Model Number	Maximum SCFM*	Thermal Transfer Model Number	Maximum SCFM*
		ACOC-400	175
AB-132A-2	350	ACOC-725	300
AB-162A-5	500	ACOC-950	625
AB-166A-5	900	ACOC-1200	800
AB-170A-5	1100	ACOC-1600	1000
AB-074A-5	1400	ACOC-2000	1500
		ACOC-2500	1800
AB-174F-10	2200	ACOC-3000	2125
		ACOC-3500	2350

*Maximum SCFM at 100 PSI and 15° approach with pressure drop less than 2 PSI

Water Coolers

BT SERIES

Modine Part Number	Thermal Transfer Model Number
25B1-1	K-508-O
25B2-1	K-512-O
25B3-1	K-514-O
25B4-1	K-518-O
35B1-1	K-708-O
35B1-2	K-708-T
35B2-1	K-712-O
35B2-2	K-712-T
35B3-1	K-714-O
35B3-2	K-714-T
35B4-1	K-718-O
35B4-2	K-718-T
50B2-1	K-1012-O
50B2-2	K-1012-T
50B3-1	K-1014-O
50B3-2	K-1014-T
50B4-1	K-1018-O
50B4-2	K-1018-T
50B5-1	K-1024-O
50B5-2	K-1024-T

Thermal and dimensional interchanges — Service parts also interchangeable

OilAir Hydraulics to Thermal Transfer Products

Approximate Thermal, Non-Dimensional Interchanges

OilAir Model Series	Model Number	Thermal Transfer Model Number*
OAD (DC Electric)	OAD-04	MA-4
	OAD-07	MA-18
	OAD-11	MA-32
	OAD-16	MA-48
	OAD-23	MA-232
	OAD-33	MA-248
OAI (AC Electric)	OAI-04-110v	BOL-8
	OAI-07-4	BOL-8
	OAI-07-2	BOL-8
	OAI-11-4	BOL-16
	OAI-11-2	BOL-16
	OAI-16-6	BOL-16
	OAI-16-4	BOL-30
	OAI-23-6	BOL-30
	OAI-23-4	BOL-30
	OAI-33-6	BOL-725
	OAI-33-4	BOL-950
	OAI-44-6	BOL-950
	OAI-44-4	BOL-950
	OAI-56-8	BOL-950
	OAI-56-6	BOL-950
	OAI-56-4	BOL-1600
	OAI-76-8	BOL-1200
	OAI-76-6	BOL-1200
	OAI-110-8	AOL-2000
	OAI-110-6	AOL-2500

*Full model code must contain connection type and motor code. For connections: -1 for NPT, -2 for SAE, -3 for BSPP. For Motors: -2 for 1PH, -3 for 3 PH, 4A for 12V, 4B for 24V, -9 for Hydraulic. EX. BOL-30-2-3PH

OilAir Model Series	Model Number	Thermal Transfer Model Number*
OAH** (Hydraulic)	OAH-007	BOL-16
	OAH-011	BOL-16
	OAH-016	BOL-400
	OAH-023	BOL-30
	OAH-033	BOL-725
	OAH-044	BOL-950
	OAH-056	BOL-950
	OAH-058	BOL-1200
	OAH-076	BOL-1600
	OAH-078	BOL-1600
	OAH-110	BOL-1600
	OAH-112	AOL-2500

*Full model code must contain connection type and motor code. For connections: -1 for NPT, -2 for SAE, -3 for BSPP. For Motors: -2 for 1PH, -3 for 3 PH, 4A for 12V, 4B for 24V, -9 for Hydraulic. EX. BOL-30-2-3PH

**Crossovers based on heat removals with equal fan RPMs. Hydraulic Motor Operating Conditions vary from OilAir Specifications

Sessino to Thermal Transfer Products

Sessino Part Number	Thermal Transfer Model Number
AP300	BOL-16
AP430	BOL-30

Approximate Thermal and Dimensional Interchange

Young Radiator to Thermal Transfer Products

OCH Series Cross Reference

Young Radiator Model Number	Thermal Transfer Model Number
OCH-24	AO-5
OCH-41	AO-10
OCH-55	AO-15
OCH-91	AO-20
OCH-130	AO-25
OCH-174	AO-30
OCH-257	AO-35
OCH-360	AO-40

Exact Thermal and Approximate Dimensional Interchanges

OCS Series Cross Reference

Young Radiator Model Number	Piping	Flow Range (GPM)	Thermal Transfer Model Number	Piping	Flow Range (GPM)
OCS-175	One Pass	10-100	AO-30	One Pass	7-90
OCS-300		10-140	AO-40		9-110
OCS-450		15-160	AOVH-40		17-200
OCS-175	Two Pass	5-60	AO-30	Two Pass	2-40
OCS-300		10-80	AO-40		4-40
OCS-450		15-100	AOVH-40		8-80

Thermal interchange only - not dimensionally

Young Radiator Model Number	Thermal Transfer Model Number
OCS-450	OCA-450
OCS-600	OCA-600
OCS-1000	OCA-1000
OCS-1500	OCA-1500
OCS-2000	OCA-2000
OCS-2500	OCA-2500
OCS-3100	OCA-3100

Exact dimensional interchange - TTP models performance exceeds that of Young models

Young Radiator to Thermal Transfer Products

Water Cooled F and HF Series Cross Reference

YOUNG RADIATOR		THERMAL TRANSFER		YOUNG RADIATOR		THERMAL TRANSFER		YOUNG RADIATOR		THERMAL TRANSFER	
Model Number	Model Number	Model Number	Model Number	Model Number	Model Number	Model Number	Model Number	Model Number	Model Number	Model Number	Model Number
HF-201-HY-1P	B-401-A4-O	HF/F-303-HR-1P	B-703-A6-O	HF/F-503-EY-4P	B-1003-C4-F						
HF-202-HY-1P	B-402-A4-O	HF/F-303-DR-1P	B-703-B6-O	HF/F-503-AY-4P	B-1003-D4-F						
HF/F-301-HY-1P	B-701-A4-O	HF/F-303-ER-1P	B-703-C6-O	HF/F-503-HR-1P	B-1003-A6-O						
HF/F-301-DY-1P	B-701-B4-O	HF/F-303-AR-1P	B-703-D6-O	HF/F-503-DR-1P	B-1003-B6-O						
HF/F-301-EY-1P	B-701-C4-O	HF/F-303-HR-2P	B-703-A6-T	HF/F-503-ER-1P	B-1003-C6-O						
HF/F-301-HY-2P	B-701-A4-T	HF/F-303-DR-2P	B-703-B6-T	HF/F-503-AR-1P	B-1003-D6-O						
HF/F-301-DY-2P	B-701-B4-T	HF/F-303-ER-2P	B-703-C6-T	HF/F-503-HR-2P	B-1003-A6-T						
HF/F-301-EY-2P	B-701-C4-T	HF/F-303-AY-2P	B-703-D4-T	HF/F-503-DR-2P	B-1003-B6-T						
HF/F-301-HY-4P	B-701-A4-F	HF/F-303-HY-4P	B-703-A4-F	HF/F-503-ER-2P	B-1003-C6-T						
HF/F-301-DY-4P	B-701-B4-F	HF/F-303-DY-4P	B-703-B4-F	HF/F-503-AR-2P	B-1003-D6-T						
HF/F-301-EY-4P	B-701-C4-F	HF/F-303-EY-4P	B-703-C4-F	HF/F-503-HR-4P	B-1003-A6-F						
HF/F-301-HR-1P	B-701-A6-O	HF/F-303-AY-4P	B-703-D4-F	HF/F-503-DR-4P	B-1003-B6-F						
HF/F-301-DR-1P	B-701-B6-O	HF/F-303-AR-2P	B-703-D6-T	HF/F-503-ER-4P	B-1003-C6-F						
HF/F-301-ER-1P	B-701-C6-O	HF/F-303-HR-4P	B-703-A6-F	HF/F-503-AR-4P	B-1003-D6-F						
HF/F-301-HR-2P	B-701-A6-T	HF/F-303-DR-4P	B-703-B6-F	HF/F-504-HY-1P	B-1004-A4-O						
HF/F-301-DR-2P	B-701-B6-T	HF/F-303-ER-4P	B-703-C6-F	HF/F-504-DY-1P	B-1004-B4-O						
HF/F-301-ER-2P	B-701-C6-T	HF/F-303-AR-4P	B-703-D6-F	HF/F-504-EY-1P	B-1004-C4-O						
HF/F-301-HR-4P	B-701-A6-F	HF/F-502-HY-1P	B-1002-A4-O	HF/F-504-AY-1P	B-1004-D4-O						
HF/F-301-DR-4P	B-701-B6-F	HF/F-502-DY-1P	B-1002-B4-O	HF/F-504-HY-2P	B-1004-A4-T						
HF/F-301-ER-4P	B-701-C6-F	HF/F-502-EY-1P	B-1002-C4-O	HF/F-504-DY-2P	B-1004-B4-T						
HF/F-302-HY-1P	B-702-A4-O	HF/F-502-AY-1P	B-1002-D4-O	HF/F-504-EY-2P	B-1004-C4-T						
HF/F-302-DY-1P	B-702-B4-O	HF/F-502-HY-2P	B-1002-A4-T	HF/F-504-HR-1P	B-1004-A6-O						
HF/F-302-EY-1P	B-702-C4-O	HF/F-502-DY-2P	B-1002-B4-T	HF/F-504-DR-1P	B-1004-B6-O						
HF/F-302-AY-2P	B-702-D4-O	HF/F-502-EY-2P	B-1002-C4-T	HF/F-504-ER-1P	B-1004-C6-O						
HF/F-302-HY-2P	B-702-A4-T	HF/F-502-AY-2P	B-1002-D4-T	HF/F-504-AR-1P	B-1004-D6-O						
HF/F-302-DY-2P	B-702-B4-T	HF/F-502-HY-4P	B-1002-A4-F	HF/F-504-HR-2P	B-1004-A6-T						
HF/F-302-EY-2P	B-702-C4-T	HF/F-502-DY-4P	B-1002-B4-F	HF/F-504-DR-2P	B-1004-B6-T						
HF/F-302-AY-2P	B-702-D4-T	HF/F-502-EY-4P	B-1002-C4-F	HF/F-504-ER-2P	B-1004-C6-T						
HF/F-302-HY-4P	B-702-A4-F	HF/F-502-AY-4P	B-1002-D4-T	HF/F-504-AY-2P	B-1004-D4-T						
HF/F-302-DY-4P	B-702-B4-F	HF/F-502-HR-1P	B-1002-A6-O	HF/F-504-HY-4P	B-1004-A4-F						
HF/F-302-EY-4P	B-702-C4-F	HF/F-502-DR-1P	B-1002-B6-O	HF/F-504-DY-4P	B-1004-B4-F						
HF/F-302-AY-4P	B-702-D4-F	HF/F-502-ER-1P	B-1002-C6-O	HF/F-504-EY-4P	B-1004-C4-F						
HF/F-302-HR-1P	B-702-A6-O	HF/F-502-AR-1P	B-1002-D6-O	HF/F-504-AY-4P	B-1004-D4-F						
HF/F-302-DR-1P	B-702-B6-O	HF/F-502-HR-2P	B-1002-A6-T	HF/F-504-AR-2P	B-1004-D6-T						
HF/F-302-ER-1P	B-702-C6-O	HF/F-502-DR-2P	B-1002-B6-T	HF/F-504-HR-4P	B-1004-A6-F						
HF/F-302-AR-1P	B-702-D6-O	HF/F-502-ER-2P	B-1002-C6-T	HF/F-504-DR-4P	B-1004-B6-F						
HF/F-302-HR-2P	B-702-A6-T	HF/F-502-AR-2P	B-1002-D6-T	HF/F-504-ER-4P	B-1004-C6-F						
HF/F-302-DR-2P	B-702-B6-T	HF/F-502-HR-4P	B-1002-A6-F	HF/F-504-AR-4P	B-1004-D6-F						
HF/F-302-ER-2P	B-702-C6-T	HF/F-502-DR-4P	B-1002-B6-F	HF/F-602-HY-1P	B-1202-A4-O						
HF/F-302-AR-2P	B-702-D6-T	HF/F-502-ER-4P	B-1002-C6-F	HF/F-602-DY-1P	B-1202-B4-O						
HF/F-302-HR-4P	B-702-A6-F	HF/F-502-AR-4P	B-1003-D6-F	HF/F-602-EY-1P	B-1202-C4-O						
HF/F-302-DR-4P	B-702-B6-F	HF/F-503-HY-1P	B-1003-A4-O	HF/F-602-AY-1P	B-1202-D4-O						
HF/F-302-ER-4P	B-702-C6-F	HF/F-503-DY-1P	B-1003-B4-O	HF/F-602-HY-2P	B-1202-A4-T						
HF/F-302-AR-4P	B-702-D6-F	HF/F-503-EY-1P	B-1003-C4-O	HF/F-602-DY-2P	B-1202-B4-T						
HF/F-303-HY-1P	B-703-A4-O	HF/F-503-AY-1P	B-1003-D4-O	HF/F-602-EY-2P	B-1202-C4-T						
HF/F-303-DY-1P	B-703-B4-O	HF/F-503-HY-2P	B-1003-A4-T	HF/F-602-AY-2P	B-1202-D4-T						
HF/F-303-EY-1P	B-703-C4-O	HF/F-503-DY-2P	B-1003-B4-T	HF/F-602-HY-4P	B-1202-A4-F						
HF/F-303-AY-1P	B-703-D4-O	HF/F-503-EY-2P	B-1003-C4-T	HF/F-602-DY-4P	B-1202-B4-F						
HF/F-303-HY-2P	B-703-A4-T	HF/F-503-AY-2P	B-1003-D4-T	HF/F-602-EY-4P	B-1202-C4-F						
HF/F-303-DY-2P	B-703-B4-T	HF/F-503-HY-4P	B-1003-A4-F	HF/F-602-AY-4P	B-1202-D4-F						
HF/F-303-EY-2P	B-703-C4-T	HF/F-503-DY-4P	B-1003-B4-F	HF/F-602-HR-1P	B-1202-A6-O						

Exact Thermal Interchanges - Approximate Dimensional, Service Parts Not Interchangeable F= Brass Shell, HF= Steel Shell

Young Radiator to Thermal Transfer Products

Water Cooled F and HF Series Cross Reference

YOUNG RADIATOR		THERMAL TRANSFER		YOUNG RADIATOR		THERMAL TRANSFER		YOUNG RADIATOR		THERMAL TRANSFER	
Model Number	Model Number	Model Number	Model Number	Model Number	Model Number	Model Number	Model Number	Model Number	Model Number	Model Number	Model Number
HF/F-602-DR-1P	B-1202-B6-O	HF/F-604-DY-4P	B-1204-B4-F	HF/F-608-AR-2P	B-1208-D6-T						
HF/F-602-ER-1P	B-1202-C6-O	HF/F-604-EY-4P	B-1204-C4-F	HF/F-608-HR-4P	B-1208-A6-F						
HF/F-602-AR-1P	B-1202-D6-O	HF/F-604-AY-4P	B-1204-D4-F	HF/F-608-DR-4P	B-1208-B6-F						
HF/F-602-HR-2P	B-1202-A6-T	HF/F-604-AR-2P	B-1204-D6-T	HF/F-608-ER-4P	B-1208-C6-F						
HF/F-602-DR-2P	B-1202-B6-T	HF/F-604-HR-4P	B-1204-A6-F	HF/F-608-AR-4P	B-1208-D6-F						
HF/F-602-ER-2P	B-1202-C6-T	HF/F-604-DR-4P	B-1204-B6-F	HF-802-HR-1P	B-1602-A6-O						
HF/F-602-AR-2P	B-1202-D6-T	HF/F-604-ER-4P	B-1204-C6-F	HF-802-DR-1P	B-1602-B6-O						
HF/F-602-HR-4P	B-1202-A6-F	HF/F-604-HY-1P	B-1206-A4-O	HF-802-ER-1P	B-1602-C6-O						
HF/F-602-DR-4P	B-1202-B6-F	HF/F-606-DY-1P	B-1206-B4-O	HF-802-AR-1P	B-1602-D6-O						
HF/F-602-ER-4P	B-1202-C6-F	HF/F-606-EY-1P	B-1206-C4-O	HF-802-HR-2P	B-1602-A6-T						
HF/F-602-A4-4P	B-1202-D6-F	HF/F-606-AY-1P	B-1206-D4-O	HF-802-DR-2P	B-1602-B6-T						
HF/F-603-HY-1P	B-1203-A4-O	HF/F-606-HY-1P	B-1206-D4-O	HF-802-ER-2P	B-1602-C6-T						
HF/F-603-DY-1P	B-1203-B4-O	HF/F-606-HY-2P	B-1206-A4-T	HF-802-AR-2P	B-1602-D6-T						
HF/F-603-EY-1P	B-1203-C4-O	HF/F-606-DY-2P	B-1206-B4-T	HF-802-HR-4P	B-1602-A6-F						
HF/F-603-AY-1P	B-1203-D4-O	HF/F-606-EY-2P	B-1206-C4-T	HF-802-DR-4P	B-1602-B6-F						
HF/F-603-HY-2P	B-1203-A4-T	HF/F-606-AY-2P	B-1206-D4-T	HF-802-ER-4P	B-1602-C6-F						
HF/F-603-DY-2P	B-1203-B4-T	HF/F-606-HY-4P	B-1206-A4-F	HF-802-AR-4P	B-1602-D6-F						
HF/F-603-EY-2P	B-1203-C4-T	HF/F-606-DY-4P	B-1206-B4-F	HF-803-HR-1P	B-1603-A6-O						
HF/F-603-AY-2P	B-1203-D4-T	HF/F-606-EY-4P	B-1206-C4-F	HF-803-DR-1P	B-1603-B6-O						
HF/F-603-HY-4P	B-1203-A4-F	HF/F-606-AY-4P	B-1206-D4-F	HF-803-ER-1P	B-1603-C6-O						
HF/F-603-DY-4P	B-1203-B4-F	HF/F-606-HR-1P	B-1206-A6-O	HF-803-AR-1P	B-1603-D6-O						
HF/F-603-EY-4P	B-1203-C4-F	HF/F-606-DR-1P	B-1206-B6-O	HF-803-HR-2P	B-1603-A6-T						
HF/F-603-AY-4P	B-1203-D4-F	HF/F-606-ER-1P	B-1206-C6-O	HF-803-DR-2P	B-1603-B6-T						
HF/F-603-HR-1P	B-1203-A6-O	HF/F-606-AR-1P	B-1206-D6-O	HF-803-ER-2P	B-1603-C6-T						
HF/F-603-DR-1P	B-1203-B6-O	HF/F-606-HR-2P	B-1206-A6-T	HF-803-AR-2P	B-1603-D6-T						
HF/F-603-ER-1P	B-1203-C6-O	HF/F-606-DR-2P	B-1206-B6-T	HF-803-HR-4P	B-1603-A6-F						
HF/F-603-AR-1P	B-1203-D6-O	HF/F-606-ER-2P	B-1206-C6-T	HF-803-DR-4P	B-1603-B6-F						
HF/F-603-HR-2P	B-1203-A6-T	HF/F-606-AR-2P	B-1206-D6-T	HF-803-ER-4P	B-1603-C6-F						
HF/F-603-DR-2P	B-1203-B6-T	HF/F-606-HR-4P	B-1206-A6-F	HF-803-AR-4P	B-1603-D6-F						
HF/F-603-ER-2P	B-1203-C6-T	HF/F-606-DR-4P	B-1206-B6-F	HF-804-HR-1P	B-1604-A6-O						
HF/F-603-AR-2P	B-1203-D6-T	HF/F-606-ER-4P	B-1206-C6-F	HF-804-DR-1P	B-1604-B6-O						
HF/F-603-HR-4P	B-1203-A6-F	HF/F-606-AR-4P	B-1206-D6-F	HF-804-ER-1P	B-1604-C6-O						
HF/F-603-DR-4P	B-1203-B6-F	HF/F-608-HY-1P	B-1208-A4-O	HF-804-AR-1P	B-1604-D6-O						
HF/F-603-ER-4P	B-1203-C6-F	HF/F-608-DY-1P	B-1208-B4-O	HF-804-HR-2P	B-1604-A6-T						
HF/F-603-AR-4P	B-1203-D6-F	HF/F-608-EY-1P	B-1208-C4-O	HF-804-DR-2P	B-1604-B6-T						
HF/F-604-HY-1P	B-1204-A4-O	HF/F-608-AY-1P	B-1208-D4-O	HF-804-ER-2P	B-1604-C6-T						
HF/F-604-DY-1P	B-1204-B4-O	HF/F-608-HY-2P	B-1208-A4-T	HF-804-AR-2P	B-1604-D6-T						
HF/F-604-EY-1P	B-1204-C4-O	HF/F-608-DY-2P	B-1208-B4-T	HF-804-HR-4P	B-1604-A6-F						
HF/F-604-AY-1P	B-1204-D4-O	HF/F-608-EY-2P	B-1208-C4-T	HF-804-DR-4P	B-1604-B6-F						
HF/F-604-HY-2P	B-1204-A4-T	HF/F-608-AY-2P	B-1208-D4-T	HF-804-ER-4P	B-1604-C6-F						
HF/F-604-DY-2P	B-1204-B4-T	HF/F-608-HY-4P	B-1208-A4-F	HF-804-AR-4P	B-1604-D6-F						
HF/F-604-EY-2P	B-1204-C4-T	HF/F-608-DY-4P	B-1208-B4-F	HF-805-DR-1P	B-1605-B6-O						
HF/F-604-HR-1P	B-1204-A6-O	HF/F-608-EY-4P	B-1208-C4-F	HF-805-ER-1P	B-1605-C6-O						
HF/F-604-DR-1P	B-1204-B6-O	HF/F-608-AY-4P	B-1208-D4-F	HF-805-AR-1P	B-1605-D6-O						
HF/F-604-ER-1P	B-1204-C6-O	HF/F-608-HR-1P	B-1208-A6-O	HF-805-TR-1P	B-1605-E6-O						
HF/F-604-AR-1P	B-1204-D6-O	HF/F-608-DR-1P	B-1208-B6-O	HF-805-DR-2P	B-1605-B6-T						
HF/F-604-HR-2P	B-1204-A6-T	HF/F-608-ER-1P	B-1208-C6-O	HF-805-ER-2P	B-1605-C6-T						
HF/F-604-DR-2P	B-1204-B6-T	HF/F-608-AR-1P	B-1208-D6-O	HF-805-AR-2P	B-1605-D6-T						
HF/F-604-ER-2P	B-1204-C6-T	HF/F-608-HR-2P	B-1208-A6-T	HF-805-TR-2P	B-1605-E6-T						
HF/F-604-AY-2P	B-1204-D4-T	HF/F-608-DR-2P	B-1208-B6-T	HF-805-DR-4P	B-1605-B6-F						
HF/F-604-HY-4P	B-1204-A4-F	HF/F-608-ER-2P	B-1208-C6-T	HF-805-ER-4P	B-1605-C6-F						

Exact Thermal Interchanges - Approximate Dimensional, Service Parts Not Interchangeable F= Brass Shell, HF= Steel Shell

Young Radiator to Thermal Transfer Products

Water Cooled F and HF Series Cross Reference

YOUNG RADIATOR		THERMAL TRANSFER		YOUNG RADIATOR		THERMAL TRANSFER	
Model Number		Model Number		Model Number		Model Number	
HF-805-AR-4P		B-1605-D6-F		F-1006-TR-1P		B-2006-E6-O	
HF-805-TR-4P		B-1605-E6-F		F-1006-AR-2P		B-2006-D6-T	
HF-806-DR-1P		B-1606-B6-O		F-1006-TR-2P		B-2006-E6-T	
HF-806-ER-1P		B-1606-C6-O		F-1006-AR-4P		B-2006-D6-F	
HF-806-AR-1P		B-1606-D6-O		F-1006-TR-4P		B-2006-E6-F	
HF-806-TR-1P		B-1606-E6-O		F-1006-AC-1P		B-2006-D10-O	
HF-806-DR-2P		B-1606-B6-T		F-1006-TC-1P		B-2006-E10-O	
HF-806-ER-2P		B-1606-C6-T		F-1006-AC-2P		B-2006-D10-T	
HF-806-AR-2P		B-1606-D6-T		F-1006-TC-2P		B-2006-E10-T	
HF-806-TR-2P		B-1606-E6-T		F-1006-AC-4P		B-2006-D10-F	
HF-806-DR-4P		B-1606-B6-F		F-1006-TC-4P		B-2006-E10-F	
HF-806-ER-4P		B-1606-C6-F		F-1008-AR-1P		B-2008-D6-O	
HF-806-AR-4P		B-1606-D6-F		F-1008-TR-1P		B-2008-E6-O	
HF-806-TR-4P		B-1606-E6-F		F-1008-AR-2P		B-2008-D6-T	
HF-808-DR-1P		B-1608-B6-O		F-1008-TR-2P		B-2008-E6-T	
HF-808-ER-1P		B-1608-C6-O		F-1008-AR-4P		B-2008-D6-F	
HF-808-AR-1P		B-1608-D6-O		F-1008-TR-4P		B-2008-E6-F	
HF-808-TR-1P		B-1608-E6-O		F-1008-AC-1P		B-2008-D10-O	
HF-808-DR-2P		B-1608-B6-T		F-1008-TC-1P		B-2008-E10-O	
HF-808-ER-2P		B-1608-C6-T		F-1008-AC-2P		B-2008-D10-T	
HF-808-AR-2P		B-1608-D6-T		F-1008-TC-2P		B-2008-E10-T	
HF-808-TR-2P		B-1608-E6-T		F-1008-AC-4P		B-2008-D10-F	
HF-808-DR-4P		B-1608-B6-F		F-1008-TC-4P		B-2008-E10-F	
HF-808-ER-4P		B-1608-C6-F		F-1010-AR-1P		B-2010-D6-O	
HF-808-AR-4P		B-1608-D6-F		F-1010-TR-1P		B-2010-E6-O	
HF-808-TR-4P		B-1608-E6-F		F-1010-AR-2P		B-2010-D6-T	
HF-810-DR-1P		B-1610-B6-O		F-1010-TR-2P		B-2010-E6-T	
HF-810-ER-1P		B-1610-C6-O		F-1010-AR-4P		B-2010-D6-F	
HF-810-AR-1P		B-1610-D6-O		F-1010-TR-4P		B-2010-E6-F	
HF-810-TR-1P		B-1610-E6-O		F-1010-AC-1P		B-2010-D10-O	
HF-810-DR-2P		B-1610-B6-T		F-1010-TC-1P		B-2010-E10-O	
HF-810-ER-2P		B-1610-C6-T		F-1010-AC-2P		B-2010-D10-T	
HF-810-AR-2P		B-1610-D6-T		F-1010-TC-2P		B-2010-E10-T	
HF-810-TR-2P		B-1610-E6-T		F-1010-AC-4P		B-2010-D10-F	
HF-810-DR-4P		B-1610-B6-F		F-1010-TC-4P		B-2010-E10-F	
HF-810-ER-4P		B-1610-C6-F					
HF-810-AR-4P		B-1610-D6-F					
HF-810-TR-4P		B-1610-E6-F					
F-1005-AR-1P		B-2005-D6-O					
F-1005-TR-1P		B-2005-E6-O					
F-1005-AR-2P		B-2005-D6-T					
F-1005-TR-2P		B-2005-E6-T					
F-1005-AR-4P		B-2005-D6-F					
F-1005-TR-4P		B-2005-E6-F					
F-1005-AC-1P		B-2005-D10-O					
F-1005-TC-1P		B-2005-E10-O					
F-1005-AC-2P		B-2005-D10-T					
F-1005-TC-2P		B-2005-E10-T					
F-1005-AR-4P		B-2005-D10-F					
F-1005-TC-4P		B-2005-E10-F					
F-1006-AR-1P		B-2006-D6-O					

Exact Thermal Interchanges - Approximate Dimensional, Service Parts Not Interchangeable

Young Radiator to Thermal Transfer Products

Young SSF to Thermal Transfer SSC Surface Area Comparison

Young Cooler	Surface Area (Sq. Ft.)	Thermal Transfer	Surface Area (Sq. Ft.)
SSF-502-*Y.**	18.1	*** SSC-1018-*4.**	17.7
SSF-502-*R.**	11.2	SSC-1018-*6.**	11.8
SSF-503-*Y.**	27.1	*** SSC-1027-*4.**	26.5
SSF-503-*R.**	16.8	SSC-1027-*6.**	17.7
SSF-504-*Y.**	36.1	*** SSC-1036-*4.**	35.3
SSF-504-*R.**	22.4	SSC-1036-*6.**	23.6
SSF-602-*Y.**	26.9	SSC-1218-*4.**	27.1
SSF-602-*R.**	17.5	SSC-1218-*6.**	17.7
SSF-603-*Y.**	40.2	SSC-1227-*4.**	40.6
SSF-603-*R.**	26.2	SSC-1227-*6.**	26.5
SSF-604-*Y.**	53.6	SSC-1236-*4.**	54.2
SSF-604-*R.**	34.9	SSC-1236-*6.**	35.3
SSF-606-*Y.**	80.8	SSC-1254-*4.**	81.3
SSF-606-*R.**	52.7	SSC-1254-*6.**	53.0
SSF-608-*Y.**	108	SSC-1272-*4.**	108.4
SSF-608-*R.**	70.2	SSC-1272-*6.**	70.7
SSF-802-*R.**	34.1	SSC-1718-*6.**	35.3
SSF-803-*R.**	50.6	SSC-1727-*6.**	53.0
SSF-804-*R.**	67.1	SSC-1736-*6.**	70.7
SSF-805-*R.**	83.6	SSC-1745-*6.**	88.4
SSF-806-*R.**	100	SSC-1754-*6.**	106.0
SSF-808-*R.**	133	SSC-1772-*6.**	141.4
SSF-810-*R.**	166	SSC-1790-*6.**	176.7